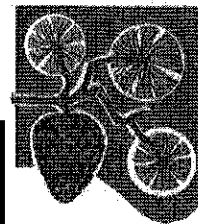


January 2018



Nisqually Pines Community Club

www.nisquallypines.com

Nisqually Pines
Community Club

8903 Pepperidge Lane SE
Yelm, WA 98597

Phone: 360-458-7370

Fax: 360-458-7157

Hours of operation:

Important Dates:

January 1st
Office Closed

January 9th
Adjudication 7pm

January 10th
Open Board 6:30pm

January 17th
Study Session 6:30pm

January 28th
CERT 6PM

**happy
New Year**

**WE WISH YOU ALL A
SAFE AND
HAPPY 2018!!**

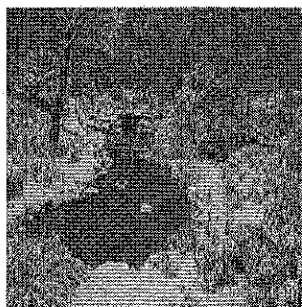


**2017-2018 Ballot Results
Finishing of the Well**

Yes: 81 No: 15 Abstain: 3

676 Mailed out-99 Ballots Returned

**A big THANK YOU to the members of our
community who came out to help with the
ballot count, we appreciate your help!!**



January 2018

Sun	Mon	Tue	Wed	Thu	Fri	Sat
	1 Office Closed	2	3	4	5	6
7	8	9 Adjudication 7pm	10 Open Board 6:30pm	11	12	13
14	15	16	17 Study Session 6:30pm	18	19	20
21	22	23 Glass Recycle	24	25	26	27
28 CERT 6pm	29	30	31			

NISQUALLY PINES COMMUNITY CLUB "CLUBHOUSE"

Looking for a place to have a meeting, birthday parties, Valentines, St. Patrick's, Easter, Cinco De Mayo, Halloween, Thanksgiving Dinner or Christmas Parties?

We have 18 tables for use and 64 chairs some are folding and regular. We have a fully useable kitchen with all the amenities. The main room comes with a TV, cable and Wi-Fi. There is also a pull down screen for watching slides or old movies on. Just need to bring your own projector.

Fees are as follows:

Members: Full Day (7:00am to 1:00am) \$75.00 plus \$150.00

Refundable cleaning deposit = \$225.00

Two hours \$25.00 plus \$75.00 refundable cleaning deposit

Members Sponsoring Non-Members:

Full Day (7:00 am to 1:00am) \$150.00 plus \$150.00 refundable cleaning deposit

Two hours \$35.00 plus \$100.00 refundable cleaning (not more than one in a three month period)

Clubs & Organizations: Weekly meetings- \$100.00 per month plus refundable cleaning deposit of \$150.00. No more than one two hour meetings per week

Monthly Meetings: \$35.00 per month plus refundable cleaning deposit of \$150.00. No more than one two hour meetings per month

If interested call the office at (360)458-7370



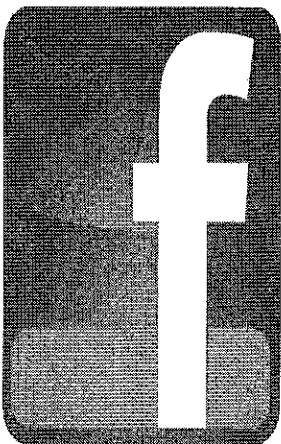
A big **THANK YOU** to the members who helped with Christmas presents for a few of the children in our community.



HOLIDAY DECORATING WINNERS

- 1st 8312 Aspen Place*
2nd 9018 Pepperidge Lane
3rd 16826 Nandina Court

Thank you to everyone that participated in the decorating. All the home's looked wonderful.



ATTENTION MEMBERS

The following Facebook page is not Nisqually Pines Operated:

Nisqually Pines Community Yelm

The contents in these pages are misleading. If you have any questions please call the office and talk to the staff for clarification.

FYI

Dumpster Days

Dumpster Days was voted down by the community in 2015-2016. Not sure when or if it will be put back on the ballot for the community to vote on. So with that being said if you have mattresses, plumbing items, carpet scraps, broken toys, furniture, miscellaneous items please take it to the dump. Here are the names, addresses and phone numbers of the dumps.

Rainier Dump: Open Friday-Sunday 9am-5pm
13010 Rainier Acres Rd. S.E.
(360)446-2600

Thurston County Waste & Recovery Center:
Open Monday-Sunday 7am-4:45pm
2420 Hogum Bay Rd. N.E.
(360)786-5494



RENTING THE CLUBHOUSE

When you come to the office to rent the clubhouse you know what day and time you have chosen. We remind you that you must pay two week's prior to the event and we need to do a walk through. So if you have booked your event for January 1st, 2018 you will need to do the walk through that Friday December 31st, 2017. On occasion we will give a reminder call if it was booked three or four months in advance.

The office does not work on the weekends and we do not appreciate it when residents come to our homes and or call us. It is your responsibility to show up and have us go over the rules with you and do the walk through. Please keep this in mind the next time you want to rent the clubhouse.

Curbside Garbage and Recycling

Rural Garbage Service-LeMay

Phone: 360-923-0111

Here is the pricing for garbage service in The Pines:

Garbage and Recycling Service for two months \$41.26

35 gallon garbage can pickup every week

96 gallon recycling bin pickup every other week

Glass pickup every four weeks, you provide container

Or

Garbage and Recycling Service for two months \$55.18

65 gallon garbage can pickup every week

96 gallon recycling bin pickup every other week

Glass pickup every four weeks, you provide container

The above prices are before taxes are added.

The dates for recycling glass bottles

January 23rd

February 20th

March 20th

April 17th

May 15th

June 12th

July 10th

August 7th

September 4th

October 2nd & 30th

November 27th

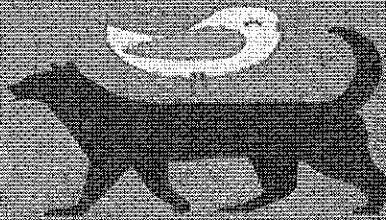
December 25th

PET SAFETY

Year round pet safety tips you don't want to forget.

Summer

- Use a PDF on Boats
- Watch paws on hot surfaces
- NEVER leave in a car
- Keep hydrated with water
- Some pets can get sunburn!



Autumn

- Keep Halloween candy AWAY from pets. Chocolate especially can be poisonous.
- Keep pets in on Halloween
- No turkey (or any kind) of bones for your pet, they can splinter.

Winter

- Antifreeze is poison, be careful.
- Keep your pets warm with booties or sweaters as needed
- Watch your pets around holiday decorations especially trees!
- Don't feed your pet table scraps, especially of candy and goodies.



Spring

- Watch for signs of allergies including skin scratching and ear problems.
- Make sure your pet has proper ID in case he gets lost
- Learn what plants are poisonous
- Get heart worm medicine from vet.

Created by callistaramblings.com

THANK YOU



ATTENTION DOG OWNERS:

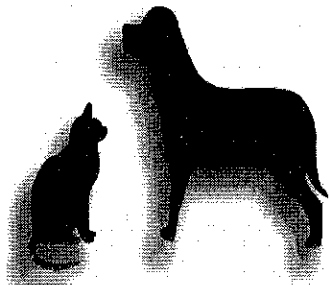
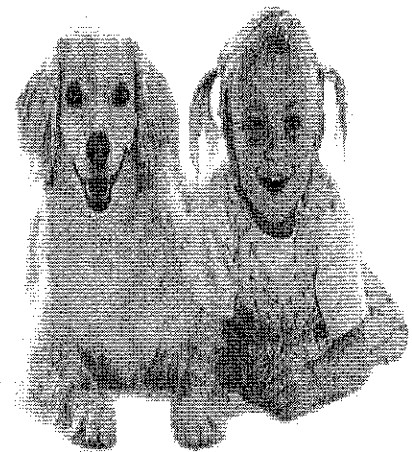
Dogs are to be on leashes at all times when outside their fenced yards. This includes all park areas, including River Park, Little Lake Park, playgrounds, clubhouse park area and office area. At the dog run area there are bags for your use. Please pick one up so that you are able to clean up after your dog.

THANK YOU!!



If your dog is lost and you cannot find him/her, you have options to recover your missing pooch:

Post it on the bulletin board at the Pines Office
Call the Yelm Veterinary Clinic 360-458-7707
Call the Yelm Animal Shelter 360-458-8438
Animal Services 360-352-2510
Closed on Mondays
Post on the Nisqually Pines Event Page



Article is from the magazine
Women First

Ant-Proof your pet's bowl

Like to keep your dog's food and water bowls on the porch, but you've spotted a few ants trying to share his food. To keep them away, use chalk to draw thick lines around the bowl. Chalk's calcium carbonate is a natural insect repellent, so the pests won't cross the border to get to the food.

River Park hours

The River Park is for members and their guests only

Any vehicle found in the River Park parking area without a Nisqually Pines Pass will be towed at the owners expense. Parking is allowed only in the park. Any vehicle on or near the road will immediately be towed.

Open year round

Hours are 8am to 7:30pm approximately

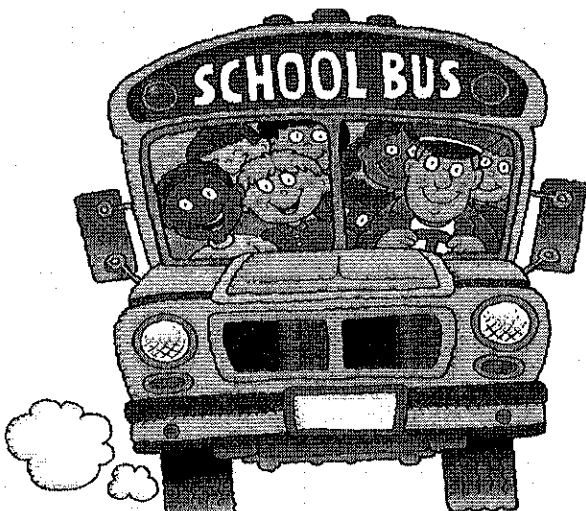
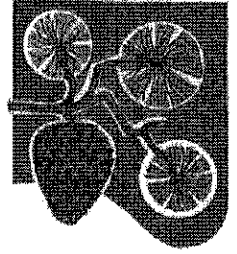
Sat & Sun Hours: 11am-9pm

No lifeguard on duty - swim at your own risk.

No alcohol permitted on the premises.

No fires or over night camping!

Per Fish and Wildlife Dept. **ONLY** Catch and Release fishing is allowed on the Nisqually River!!



The mornings are dark when the upper grades are walking to the bus stop. Little ones will be walking later in the mornings to their bus stops. Please be careful and watch for upper and lower grade children.

Speed limit is 20mph

Please renew your burn permit. You can go online at www.orcaa.org

****Seasoned firewood only during burn ban!****

You may not burn wood of any kind that is processed. All wood has to be in it's natural form. If you have any questions please call the number for **ORCAA.**

Fire may be no higher than 3ft.

A Word from our Staff

Office Manager: *Charity Mayerl*

Email: cmayerl@nisquallypines.com, Phone: 360-458-7370 Fax: 360-458-7157

Please make sure the office has a current telephone/cell number for you, in case of emergency.

Office Assistant & Property Standards: *Paulette Howard*

Email: propertystandards@nisquallypines.com, Phone: 360-458-7370, Fax: 360-458-7157

Home Owners: Please make sure that your renters have copies of the 94.1 so they have the rules for The Pines.

Water Department: *Julie Rhey-Baumann*

Email: waterdept@nisquallypines.com, Phone: 360-458-7393, Fax: 360-458-7157

Happy New Year!

I am still seeing hoses connected to your outside hose bibs. Please disconnect them and winterize those hose bibs, if they freeze and bust we cannot give you credit on your water bill because you didn't winterize.

During the cold weather keep your animals water bowls unfrozen and their house stuffed with straw. For flea problems mix cedar chips with the straw, you can get a bag at Tractor Supply or any farm supply store.

They're not wild animals they depend on you to take care of them.

Keep an eye on the usage line on your water bills, we only recheck 2000 and more cubic feet, so if you are a small user and went up to 1500 cubic feet we may not catch it. If you think you may have a leak just call and we will come check your meter.

We will be sending out water surveys again in February, please fill out and return to the office.

Please contact water MANAGER for water shut-offs.

Maintenance Department: *Bob Smith and Don Robinson*

Email: maintenance@nisquallypines.com, Phone: 360-458-7393, Fax: 360-458-7157

**Each resident is responsible for their own yard/tree debris.
Please don't call the office for pick up or put on the easement.**

Tips from our Water Manager

Culverts:

The culverts under your driveway are YOUR responsibility to keep cleaned out of all debris. Please clear them so the rain water will flow in the proper direction.

Gutters:

Time to clean out those gutters, so they won't overflow, wicking up the plywood on the roof causing rotting of the wood. Also make sure the water is running through the down spout to the ground.

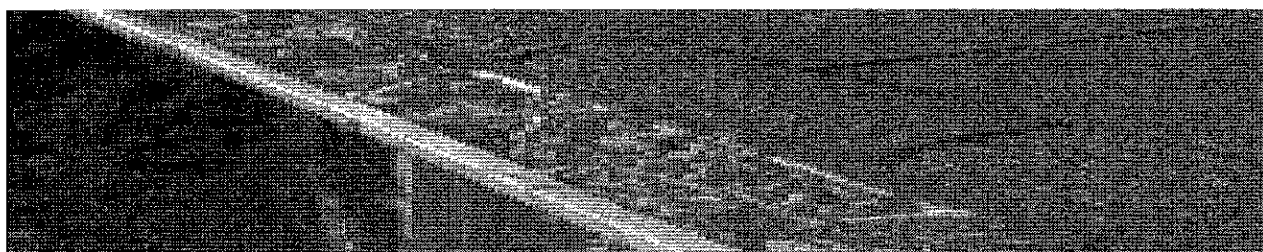
Water Shut Offs:

In case of a water emergency, do you know where your water shut off to your house is? All houses should have a shut off of their own for their home. If you don't know where yours is, you may want to call a local plumber to install one. They can put it in pretty easy right where your water line comes into the house. The meter box is Nisqually Pines shut off and should not be accessed by the homeowner.

Garbage Cans:

Your garbage service is on Tuesday, that means there should not be any garbage cans on the road on Wednesday.

Questions? Contact Julie at 360-458-7393 or waterdept@nisquallypines.com



Board News

Board of Directors

Sherry O'Dell-President, Pool and Clubhouse

Cory Parsons-Vice President, Water, Maintenance, Security, Office, River Park, Treasurer

Michael Koon-River Park, Little Park and Playground Park

Dayna Brown-Secretary, Pool, Clubhouse

Tony Sny-Board Member

Board Updates

We meet once a month, meetings have been very productive and we feel we are getting a lot accomplished. However, the additional members would allow us to get more accomplished faster. Please come check out a meeting or two and see what is happening in our community and how you can help!

The port-a-potty's will start to be locked up at dusk and unlocked in the morning when the maintenance gets here. The two play area parks will close at dusk and the River Park will close at 9pm.

Persons with disabilities who require accommodation or alternative means for communication of program information should contact (Nisqually Pines at (360)458-7370) at least eight (8) days in advance of this meeting.

Updates

Treasurer's Report:

Ending Balance for October 2017

General Fund: \$496,218.26

Long Range Plan: \$488,090.45

Water Loan 1 Fund: \$32,881.76

Emergency Fund: \$20,193.89

Key Bank USDA Loan: \$213,130.99

Gold Money Market: \$166,012.61

Twin Star Savings: \$19,686.65

Investment Portfolio: \$249,383.55

Stmnt not rec'd by 11/8/17

Grand Total \$1,685,598.16

Committee Happenings

Adjudication

December-no meeting Next meeting: January 9th, 2018

Members: Phyllis Myers, Theresa Donovan, Rob Parkhill, Luke Clark and Madelon Barton

Contact: Sherry O'Dell

Closed meeting, not open to anyone not directly involved.

Looking for residents in good standing to volunteer on Adjudication Committee

Get an application at the office-Renters can be on Adjudication with the approval of homeowner

Finance

TBA

Members: Madelon Barton, Sherry O'Dell, Charity Mayerl, Connie Ihringer

Interested in helping on the Finance Committee-Get an application at the office

Must be a member in good standing

Finance committee members needed!!!

Events

Need volunteers to help organize for up coming events. Contact the office if you are interested! Next meeting: Meeting will be decided by how many volunteers call and want to be part of this event. Next event: TBA

Anyone interested in being on Event Planning Committee call the office.

Event planning help, looking for someone to take over events or they will not continue.

Members: Charity Mayerl, Rob Parkhill, Paulette Howard

Contacts: Sherry O'Dell

Most of our committees are small and consist of the same volunteers, please come and listen to what they are working on and see if maybe you can help!

Updates

Property Standards

Last month the following warnings or fines were issued:

23 Thank yous	1 2nd dwelling
3 certified letters	1 fine
18 debris	1 dog loose
1 courtesy	8 parking on easement
5 junk vehicle	
1 basketball stand	
1 nuisance	

94.1.035 What domestic activities are prohibited in The Pines? No person within the legal boundaries of Nisqually Pines Community Club shall:

(2) (c) Allowing or contributing to the accumulation of garbage, refuse, litter and/or unsightly materials, including vehicles (limit 5 (five) automobiles of any kind and watercrafts), on private community property;

1st	2nd	3rd	4th	& consecutive offenses
\$100	\$250	\$500	\$1000	

I have had a few complaints about people walking and not moving out of the road. I will send a warning letter and the next time it will be a fine.

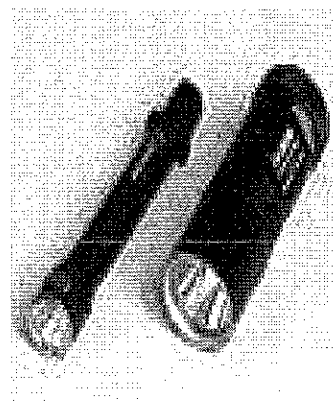
If you are new to the Pines and do not have a copy of our current Resolution 94-1, please stop by the office to pick up a copy or view online at www.nisquallypines.com.

**Speed limit is 20 MPH
Please slow down!**

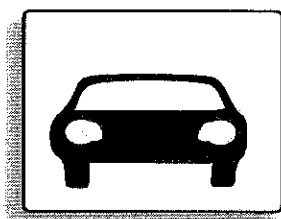
Please watch for children and parent's please remind your children to watch for cars and not to block the roadways. Please slow down and watch for walkers/joggers/bikers

It is getting darker earlier- **PLEASE** be mindful of vehicle traffic!! For your safety, please walk along the edge of the roads or in the easement against oncoming traffic.

Carry a flashlight or wear bright colored clothes so you can be seen easier during the twilight and evening hours.



Bicycle riders— please make sure your reflectors work or you have a light so you are more visible.



Car Owners— Check your front headlights and rear taillights to make sure that they are in working condition.

C.E.R.T

CERT is looking for members to join them on the last Sunday of every month at 6pm. Learn about emergency preparedness in your community and what you can do to help yourself and your community.

January 28th @ 6pm
Clubhouse

PUGET SOUND ENERGY

Call 811 Before You Dig

As winter approaches, you may have plans to start construction and landscaping projects. Your friends at Puget Sound Energy want to remind you about the importance of calling 811 at least two business days prior to any digging. It is the law, and utility-owned lines are located for free.

Whether you are planning to use your employees or hire a contractor, start digging means calling 811 before each job. Outline your dig area in white paint so that the utilities will know where to mark. Even homeowners digging on their own property must call, if digging deeper than 12 inches.

Don't take a chance. Call 811 before you dig, then dig by hand within 2 feet of the markings.

Visit their Safety page to learn more about gas and electric safety, and our Business Services page for all your energy needs.

For questions, please email businessaccountservice@pse.com



PARK TRAIL

The trail from Heather to the River Park is "Use at your own risk" due to the storm damage and erosion.



LITTERING

WHY PEOPLE LITTER

- Lazy
- Don't Care
- Litter begets litter
- Ignorance
- No sense of pride
- Lack of consequences for their actions

Classified Ads

Handy Man

Roof repairs or replacement
Skylight replacement, roof cleaning
Call Wes Craney
360-970-4480

Affordable prices, honest
& efficient.

I'm experienced in painting, texture,
flooring, tiling, carpeting, sheet
rock, etc.

Also outside work: welding, trim-
ming, cutting trees, landscaping,
lawn mowing, pressure washing,
deck repair & mechanic.

Call 360-970-1992

Certified in home Provider

**Seeking Clients or
housekeeping jobs**

Rides to appointments or chores

Honest and dependable

Will work by the hour or the job

Call Julie 253-380-5290

Caregiver Wanted

Looking for someone
part-time caregiving for a
disabled adult
Contact Laurie
(253)441-5806

WANTED

Caregiver 4 days
a week needed
(360)458-7294

AVON

Been looking for some
Avon? Now is the time
to call (360) 955-5100

Claudia Privette
Independent Sales
Representative

For Sale

Mirro Canner

Holds 7 qt. Jars

18 pints or

8-1 1/2 pts.

\$50

Weber Gas Grill

Good Condition

Extra Propane tank

\$30

Call (360)458-4843

Hi Laker easy

loader w/ trailer

20HP Johnson

Motor

Title for boat &

trailer

\$2,000

(360) 522-0474

OPEN PUBLIC

BINGO

NISQUALLY

MOOSE LODGE

Monday's at 6:30pm

1117 Yelm Ave. W

(360)458-3381

For Sale

Baby High Chair

Vintage 1950 era

\$100

Pink Cradle \$50

(360)464-0993

House Cleaning

College student will

clean your home

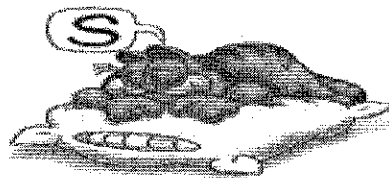
Have excellent refer-
ences

Call April

(360)701-6685

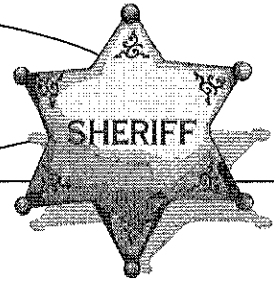
REMINDER

Quiet hours are from 10pm-7am
7 days a week



To advertise
here contact the
office staff
360.458.7370

Police Blotter

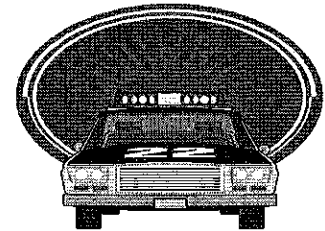


November

- 23-Routine Patrol, warrant arrest, runaway phone detail, theft phone detail
- 26-Routine Patrol, traffic stop verbal warning given
- 27-Routine Patrol

December

- 1- Routine Patrol
- 3- Routine Patrol
- 4- Routine Patrol
- 5- Routine Patrol, traffic stop infraction issued
- 8- Routine Patrol, disturbance Mariana Ct., traffic stop, reckless on Port Orford/Heather, malicious mischief Silverbell
- 9- Routine Patrol
- 10- Routine Patrol
- 11 -Routine Patrol, follow up domestic Nana Ct., domestic on Deodar
- 12 -Routine Patrol, auto theft Kalmia cleared
- 13 -Routine Patrol, suspicious male looking over fence Thuja, pile of stripped bikes on Thuja behind fence
- 14 -Routine Patrol, 911 hang up Thuja unfounded
- 15- Routine Patrol, suspicious person Linden
- 17-Routine Patrol, parking violation Holly resolved, parking violation Wisteria resolved
- 18- Routine Patrol, suspicious vehicle front entrance
- 19- Routine Patrol, traffic stop Briar driver issued warning for speeding, Domestic Disturbance Whitewood resolved
- 20- Routine Patrol
- 21- Routine Patrol, traffic stop for speed verbal warning



Routine Patrol means house checks, Clubhouse, River Park, Office and area patrol. If you see something suspicious, call 911. Don't wait until the next day and call the Pines Office.

****Please note that if you call the Sheriff and they aren't in the Pines on our time, their response time will vary on type of emergency. ****

The non-emergency number for the sheriff is 360-704-2740 Please lock doors and don't leave valuables in your vehicles. If you are going on vacation, you can have the sheriff check your house to make sure it is secure.

Fill out a vacation request form at the office.

Since we have the Thurston County Sheriff in The Pines we have seen less criminal activity.

Suspicious Activity contact Thurston County Narcotics Task Force

Website: co.thurston.wa.us

Created by NPCC Staff and Board of Directors.
If you have anything you would like to see more or less of,
please let us know!!

Deadline is the 20th of the month.



Able Concrete LLC
ABLECCL054D8

John Orr - Owner
Yelm, Washington
Cell - 360-628-4132

jaorr@ableconcretewa.com
www.ableconcretewa.com



George Grinstine

George's
Rod & Reel Repair

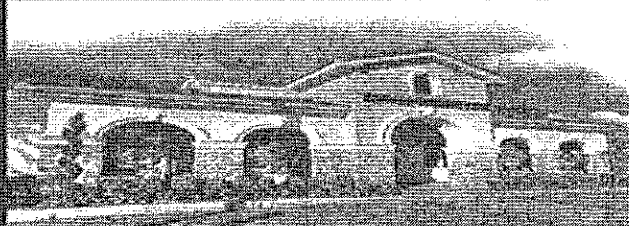
Custom Rods and Reel Repair
georgesrodandreel@comcast.net

17221 Briar St SE
Yelm, WA 98597

360-960-8643

"Your Local Re/Max office"

COUNTRY
Property Management & Real Estate Services



206 West Yelm Ave. Yelm, WA 98597

Michelle (Micki) Easterly
Property Manager/Realtor

253-831-2680 / 360-400-3475
www.YelmWaRealEstateAgent.com

Paid Advertisement

8 interesting facts about winter

It's the time of year when the earth's axis is most tilted away from the sun giving us the coldest season of the year when the UK weather becomes characterised by unsettled and windy weather.

Winter is a fascinating time of year and we've got 8 interesting facts about the season.

1. Winter is coming

There are two different dates when winter could be said to begin, depending on whether we are referring to the Meteorological or Astronomical winter.

Winter defined by the Earth's orbit around the sun, begins on the equinox which falls on 21 or 22 December.

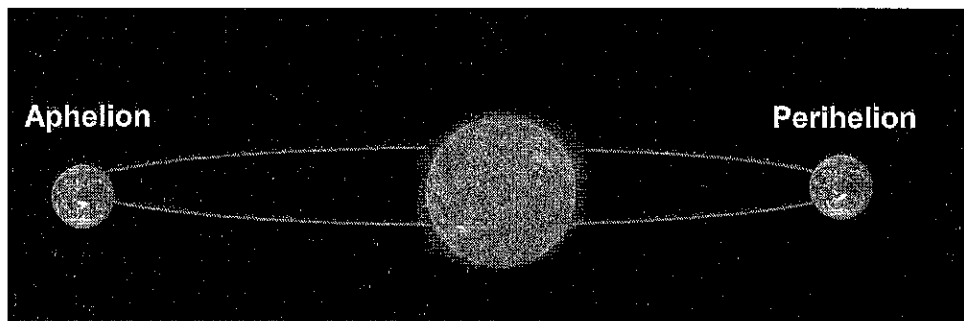
However, when recording and comparing climate data, it is important to have set dates that can be compared and so for this reason a fixed date of the 1 December is used to mark the start of the meteorological winter.

2. Earth is closest to the sun in winter

You might be surprised to know that in the northern hemisphere the earth is closest to the sun during winter.

Around the 3 January, the Earth reaches *perihelion* (*peri* meaning 'near' and *helion* meaning 'sun') and the earth is 3.1 million miles closer to the sun than at *aphelion* (around July 5 when the earth is furthest from the sun).

Earth's distance from the sun is not what causes the seasons but it does affect the length of them. Around *perihelion* the earth is moving around 1 kilometre per second faster than at *aphelion* which results in winter being 5 days shorter than summer.



3. Coldest temperature recorded in winter

The coldest temperature ever recorded during a UK winter was $-27.2\text{ }^{\circ}\text{C}$ which was recorded in the village of Braemar in the Scottish Highlands.

The same temperature has been recorded twice, first on 11 February 1895 and again on 10 January 1982.

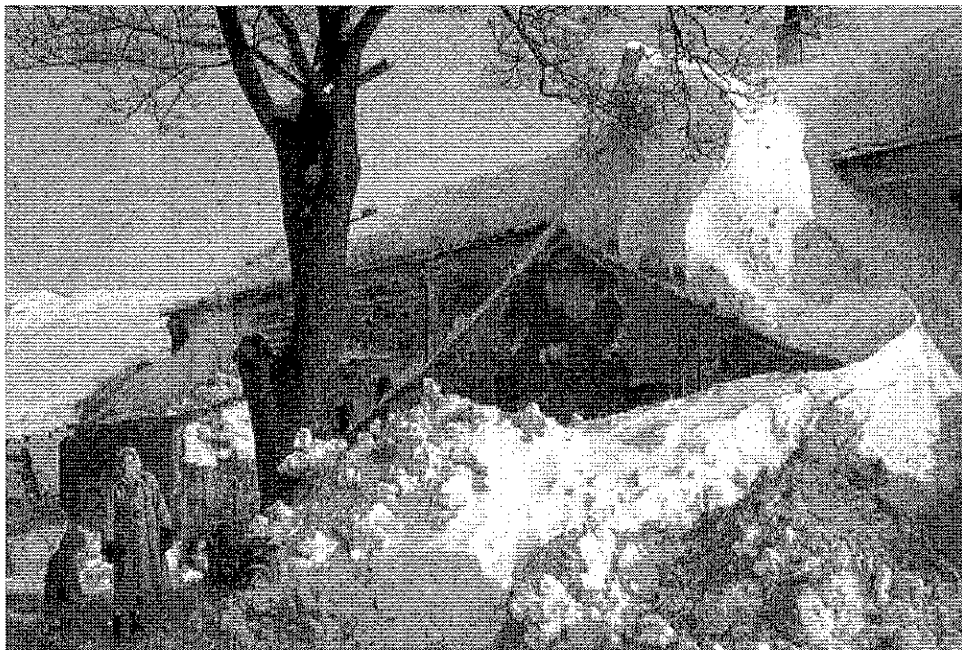


4. The winter of 1963

The winter of 1963 is one of the coldest on record and the coldest on since 1740. Temperatures consistently reached lower than - 20 °C with blizzards, snow drifts and even the sea freezing around the coast.

The severe cold began just before Christmas in 1962 as a high pressure system sat to the north east of the UK for much of the winter dragging cold polar winds over the UK.

On 29 and 30 December, a blizzard struck the UK with snowdrifts up to 6 metres deep. Snow continued to fall frequently and until early-March 1963, much of the UK remained covered in snow.



5. The roots of winter

The word winter comes from the Germanic *wintar* which in turn is derived from the root *wed* meaning 'wet' or water', and so signifying a wet season.

In Anglo-Saxon cultures, years were counted by the winters, so a person could be said to be '2 winters old'. The first day of winter was also of symbolic importance named *Vetrardag* and falling comparatively early in the year between October 10th and 16th.



6. Wet snow vs. dry snow

Ever wondered why sometimes snow sticks together and sometimes is powdery and loose? The reason for this lies in the snowflakes journey as it falls through the atmosphere.

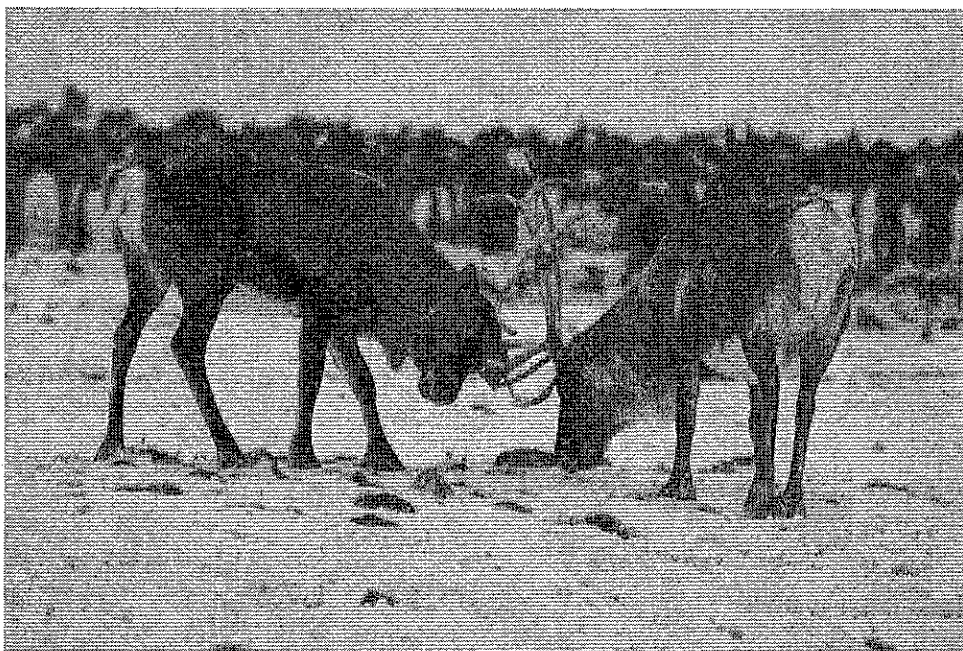
Snowflakes that fall through a dry, cool atmosphere will be small and powdery and won't stick together. We call this **dry snow** - its ideal for snowflakes, but not for building a snowman.

The snowflakes that form **wet snow** will have fallen through temperatures slightly warmer than 0 °C. As they fall, the snowflakes melt slightly around the edges and stick together to form large, heavy flakes. This sticks together easily and is the best for a snowball fight and making snowmen.

7. Reindeer vision

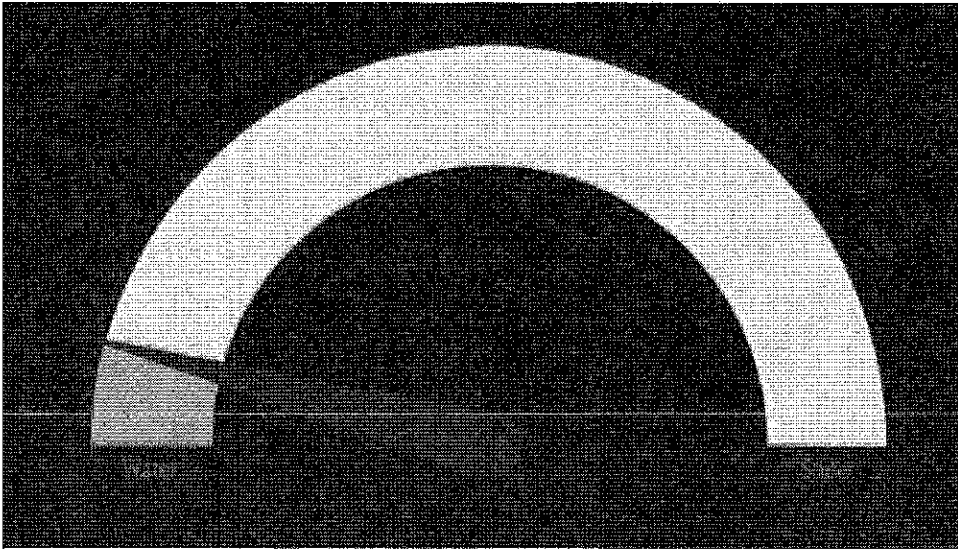
Some reindeer living above the Arctic Circle live in complete darkness for several weeks of the year.

To adapt to this, a small area of tissue behind the retina called the *tapetum lucidum* changes colour from a gold colour in summer months to blue in winter. This allows the reindeer's eyes to detect ultraviolet light and to see in the dark.



8. How much water is there in snow?

The exact amount of water contained in snow can vary quite significantly depending on how the snow formed, but as a general average, every 12 cm of snow would provide 1 cm of water.



Last updated: 8 November 2017

 **Met Office**

© Crown Copyright 2017